

**TEMPEST**  
GAMING

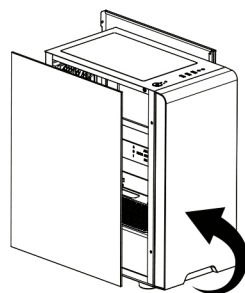
# VISION

ATX GAMING CASE

## ACCESSORY BAG

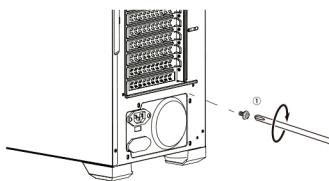


### A. Disassemble the side panel and the front panel



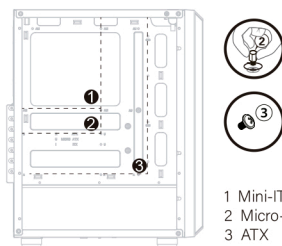
Please take out the screws before disassembling side panels.  
Please remove the side panels before disassembling the front panels.

### B. Install the Power Supply



Please make sure that the holes of power supply aim at case cooling vents when installing power supply.

### C. Install the Motherboard

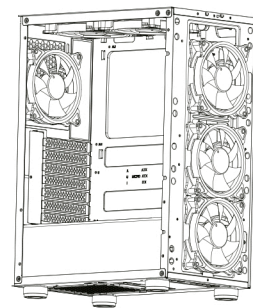


Please make sure that the motherboard aims at the copper cylinder and fix motherboard with No.3 screw.

#### NOTE

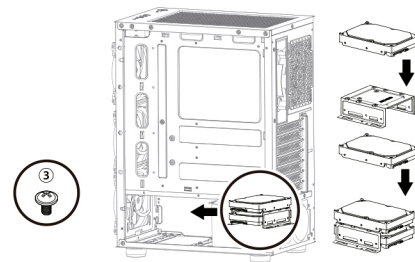
If the copper pillar of the case drops off, please fix it with No.2 copper cylinder.

### D. Install Fan and Radiator



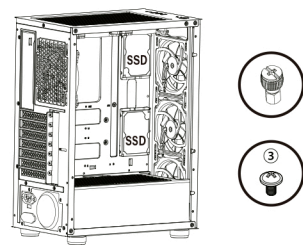
Fan  
Front: 120mmx3 140mmx2  
Rear: 120mmx1  
Top: 120mmx2 / 140mmx2

### E. Install HDD



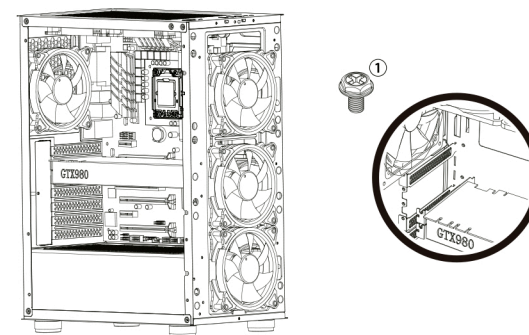
Hard disk enclosure for both SSD and HDD; unscrew hard disk enclosure and install HDD with screws.

### F. Install SSD



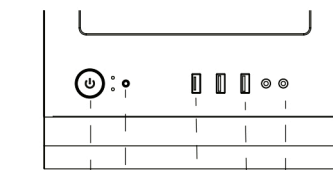
Hard disk enclosure for both SSD and HDD; unscrew hard disk enclosure and install HDD with screws.

### G. Install VGA card and disassemble the expansion slot

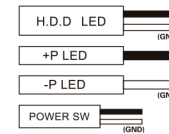
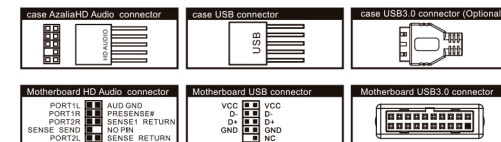


Remove the baffle marked in the picture, make sure the VGA card aims at the motherboard slot and then fix VGA card and case with No.1 screw.

VGA card bracket is equipped, which can be adjusted according to VGA card location.



POWER RESET USB3.0\*1 HD Audio  
USB2.0\*2



MORE INFORMATION AT [www.tempestofficial.com](http://www.tempestofficial.com)

**TEMPEST**